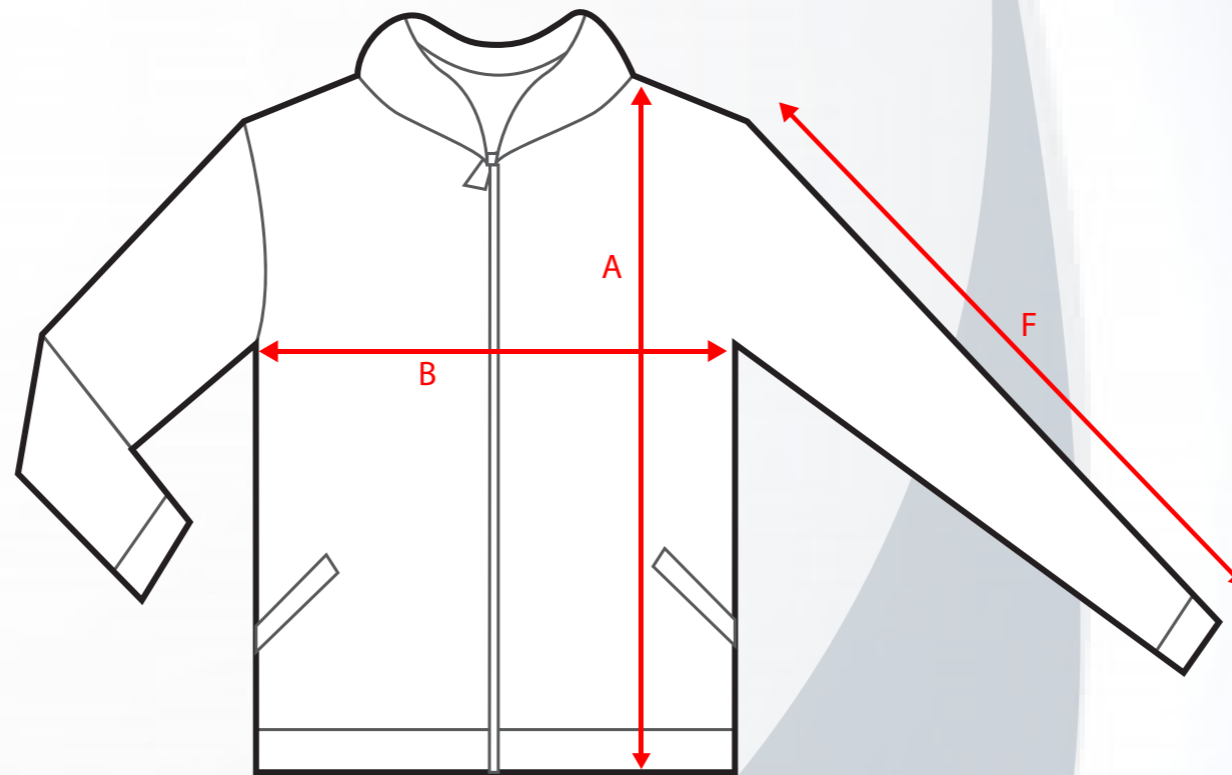


MENS STYLE 701

MENS HOODED JACKET



POINT	MEASUREMENT POINT	SIZE								
		S	M	L	XL	2XL	3XL	4XL	5XL	6XL
A	TOTAL LENGTH FRM HPS (CM)	71	72.5	74	75.5	77	78	79	80	81
B	HALF CHEST (CM)	53.5	55.5	57.5	59.5	62	64.5	67	69.5	73.5
F	SLEEVE LENGTH (CM)	65	66	67	68	69	70	71	72	73

Maßtoleranz bei ½ Oberweite +/- 1,5 cm und bei Länge +/- 2,0 cm - Dimensional tolerance for ½ chest +/- 1.5 cm and length +/- 2.0 cm

